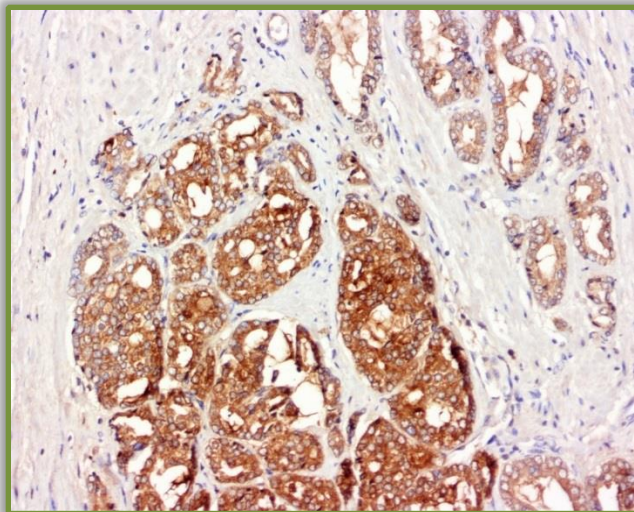
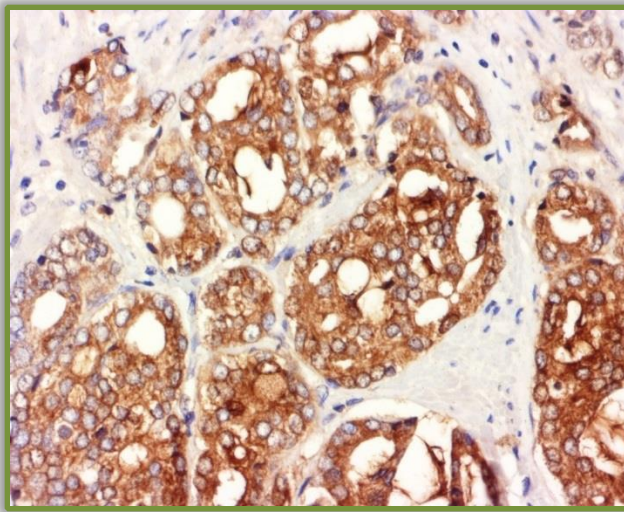


ihcPrime™ PSA Reagent

Anti-Human PSA (Clone C136)



Prostate Using FFPE Tissue



Prostate Using FFPE Tissue

- Catalog Numbers: RK31039-XXX, goes with ihc DAB K50001-### and ihc Blocker K51001-### (Intl.) or K51002-### (USA)
- Package Size: (XXX) -005: For ~50 IHC Tests using frozen or FFPE tissues
-010: For ~100 IHC Tests using frozen or FFPE tissues
- Antibody: Mouse
- Storage: Store at 4°C upon receiving. DO NOT FREEZE.
- Intended Use: For Research Use Only

The ihcPrime and ihcDirect® are conjugated primary antibodies, including therapeutic (abs) directly onto polymerized HRP enzymes that can deliver test results in as short as 10-minutes. This direct labeling approach improves performance by eliminating secondary antibodies, greatly simplifying test procedures while driving exceptionally fast immunohistochemistry (IHC) test results for both frozen and FFPE tissues. No special equipment is required!

ihcPrime Prostate Specific Antigen (PSA) polyHRP Anti-Human Staining Kit immunohistochemistry (IHC) reagent is for use on frozen and formalin-fixed-paraffin-embedded tissues. Prostate-specific antigen (PSA) is a 34 kDa glycoprotein produced by the prostate epithelium. Studies have shown that PSA is used to confirm prostatic acinar cell origin in primary and metastatic carcinomas and to rule out non-prostatic carcinoma mimics. Prostate Specific Antigen (PSA) is strongly associated with prostate adenocarcinoma and for all prostate cancers. The PSA antibody recognizes primary and metastatic prostatic neoplasms but not tumors of nonprostatic origin.