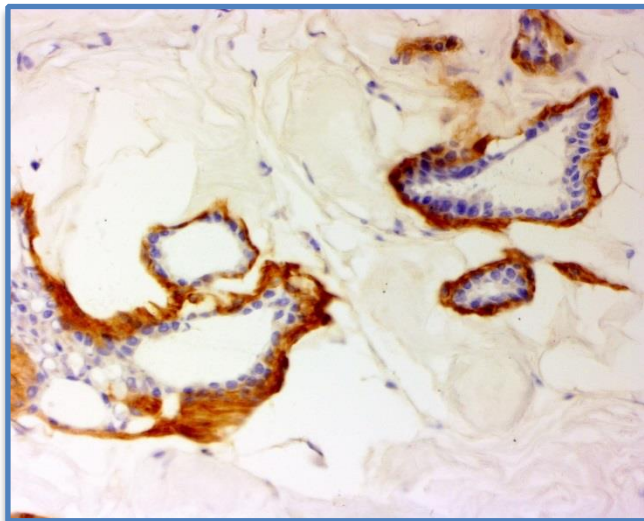
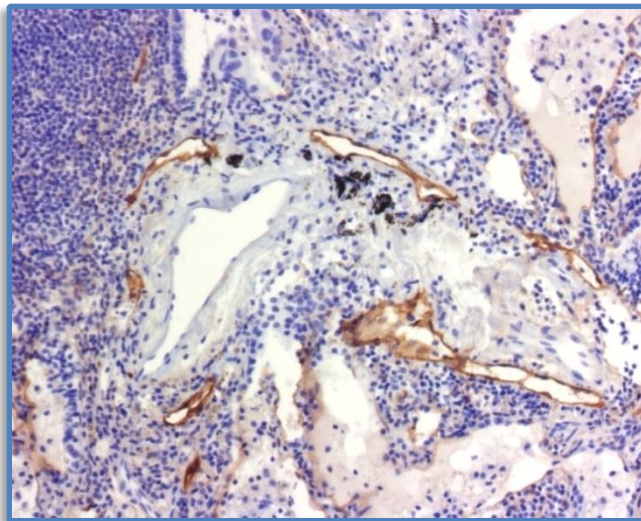


ihcDirect[®] Podoplanin Kit Anti-Human Podoplanin (Clone C125)



Breast Using Frozen Tissue



Lymphatic endothelium in lung stromal tissues using FFPE

Catalog Number: K41025-XXX:

Package Size: -005: For ~50 IHC Tests using frozen or FFPE tissues
(XXX) -010: For ~100 IHC Tests using frozen or FFPE tissues

Antibody: Mouse

Storage: Store at 4°C upon receiving. **DO NOT FREEZE.**

Intended Use: For In Vitro Diagnostic Use

ihcDirect Podoplanin is a polymerized horseradish peroxidase (polyHRP) labeled Podoplanin (C125) antibody intended for laboratory use to qualitatively identify by light microscopy the presence of Podoplanin in formalin-fixed, paraffin-embedded (FFPE) tissue sections or frozen tissues using immunohistochemistry (IHC) test methods. The clinical interpretation of any staining or its absence should be complemented by morphological studies using proper controls and should be evaluated within the context of the patient's clinical history and other diagnostic tests and proper controls interpreted by a qualified pathologist and/or physician. This conjugate has been pre-diluted and optimized for IHC use without further dilution.

Summary and Explanation:

ihcDirect Podoplanin Kit (Clone C125) immunohistochemistry (IHC) reagent is for use on frozen and formalin-fixed-paraffin-embedded tissue sections. Antibody (Clone C125) reacts with Podoplanin, also known as PDPN, a 35-43kD glycoprotein. Podoplanin is selectively expressed in lymphatic endothelium as well as lymphangiomas, Kaposi sarcomas and in a subset of angiosarcomas with probable lymphatic differentiation. Podoplanin has also been shown to be expressed in epithelioid mesotheliomas, hemangioblastomas, seminomas and some oral squamous cell carcinomas. The ihc Blocker provided in the kit used prior to applying pHRP Podoplanin conjugate can reduce background and nonspecific staining. Chromogen 3,3'-diaminobenzidine (DAB) is used in this kit.

