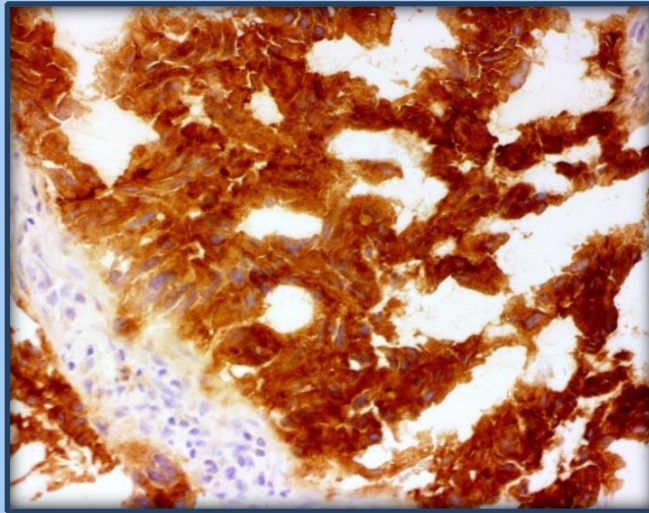
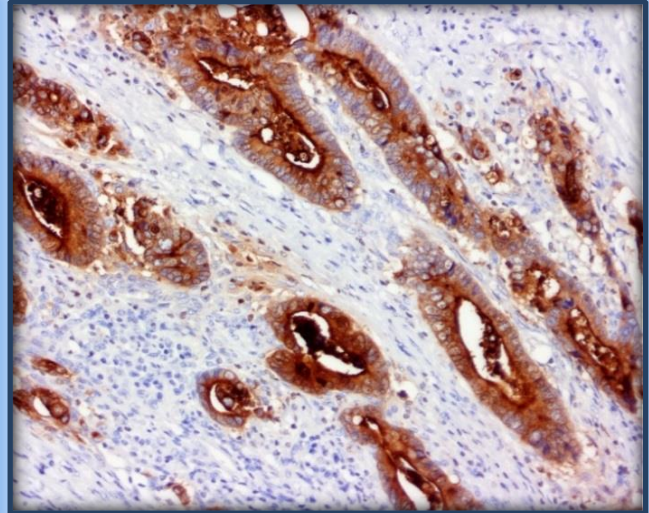




ihcDirect[®] CEA Ab Reagents Anti-Human Carcinoembryonic Antigen (Clone C135)



Colon Cancer Using Frozen Tissue



Colon Cancer Using FFPE Tissue

- Catalog Numbers:** K31038-XXX, for use with DAB Kit (ihc DAB Chrom) K50001-015, K50001-030 and ihc Blocker K51001-015 (Intl.) or K51002-015 (USA)
- Package Size:**
(XXX) -005: For ~50 IHC Tests using frozen or FFPE tissues
-010: For ~100 IHC Tests using frozen or FFPE tissues
- Antibody:** Mouse
- Storage:** Store at 4°C upon receiving. DO NOT FREEZE.
- Intended Use:** For *In Vitro* Diagnostic Use

Polymerized horseradish peroxidase (polyHRP)-labeled anti human CEA (Clone C135) antibody is intended for laboratory use to qualitatively identify by light microscopy the presence of CEA molecules which are expressed in many normal cells or tumors in sections of formalin-fixed, paraffin-embedded (FFPE) and/or frozen tissues (FT) using immunohistochemistry (IHC) test method. The clinical interpretation of any staining or its absence should be complemented by morphological studies using proper controls and should be evaluated within the context of the patient's clinical history and other diagnostic tests and proper controls interpreted by a qualified pathologist and/or physician. This conjugate has been pre-diluted and optimized for IHC use without further dilution.

Summary and Explanation:

The ihcDirect CEA is a polyHRP conjugated mouse monoclonal antibody intended for laboratory use as a qualitative immunohistochemistry reagent for the identification of CEA antigen in both frozen and FFPE tissues. CEA refers to Carcinoembryonic Antigen and is also known as CD66e. It expresses in nearly 100% colorectal cancers (CRC) and is a biomarker commonly used in a colorectal cancer IHC antibody panel. CEA expression is seen in adenocarcinomas from the lung, colon, and stomach. The marker is often used with other markers to help distinguish between adenocarcinoma and epithelioid malignant mesotheliomas.

