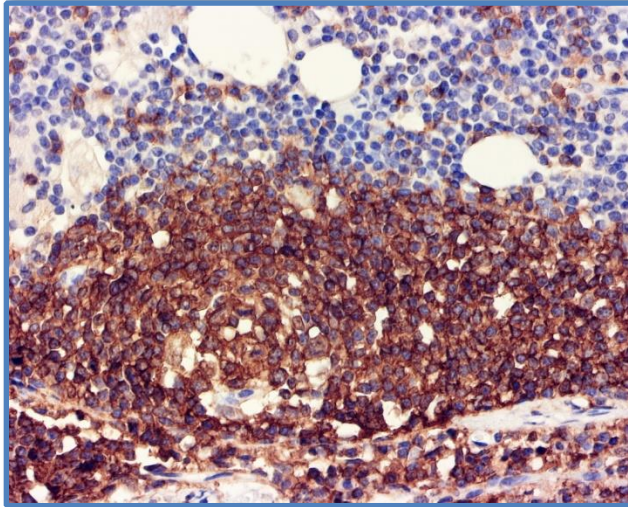




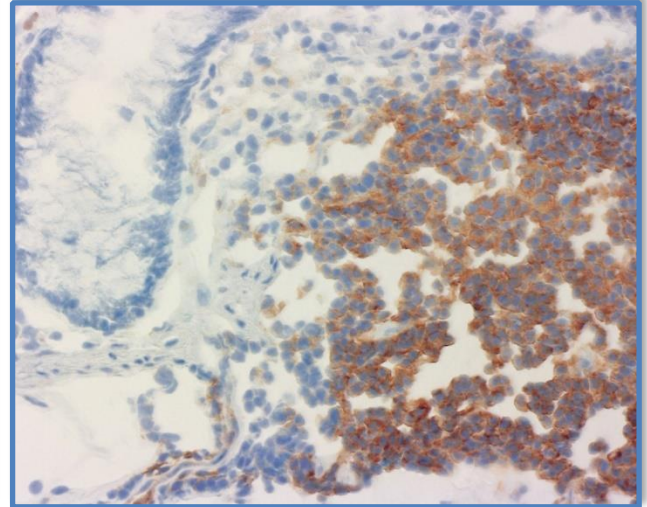
**NOVODIAX**

Advancing immunoassays through innovation

## ihcDirect® CD20 Reagent Cluster of Differentiation Anti-Human CD20 (Clone R272)



Lung Cancer, FFPE Tissue



Colon, Frozen Tissue

Catalog Numbers: K32029-XXX, goes with ihc DAB 1:1 Kit K50002-### or DAB Kit, K50001-### and ihc Blocker K51001-### (Intl.) or K51002-### (USA)

Package Size: -005: For ~50 IHC Tests using frozen or FFPE tissues  
(XXX) -010: For ~100 IHC Tests using frozen or FFPE tissues

Antibody: Rabbit

Storage: Store at 4°C upon receiving. DO NOT FREEZE.

Intended Use: For *In Vitro* Diagnostic Use

Polymerized horseradish peroxidase (polyHRP)-labeled anti-CD20 (R272) rabbit monoclonal antibody is intended for laboratory use to qualitatively identify by light microscopy the presence of CD20 in sections of formalin-fixed, paraffin-embedded (FFPE) and/or cryostat tissues using immunohistochemistry (IHC) test methods. The clinical interpretation of any staining or its absence should be complemented by morphological studies using proper controls and should be evaluated within the context of the patient's clinical history and other diagnostic tests and proper controls interpreted by a qualified pathologist and/or physician. This conjugate has been pre-diluted and optimized for IHC use without further dilution.

ihcDirect CD20 Ab (B-lymphocyte antigen) is a membrane polypeptide protein of 30-33 kDa size. The antigen is present in a majority of B-cells in peripheral blood and lymphoid tissues. In normal lymphoid tissue, CD20 antibody marks B-cells in germinal centers, particularly immunoblasts. The antibody recognizes Reed-Sternberg cells, predominant in Hodgkin's disease, in a minority of cases. ihcDirect CD20 antibody may be used in multiple biomarker test panels to help differentiate B-cell lymphoma from other neoplasms. ihcDirect CD20 may also be used in conjunction with other markers such as CD45 to gain a broader understanding of leukocytes to help identify B-cell and T-cell lymphomas. Some B-cell lymphomas after treatment with a therapeutic antibody rituximab or its biosimilar may become CD20 negative. In this situation, other B-cell biomarkers should be utilized. Since no staining of histiocytes or plasma cells has been observed and CD20 has rarely been detected in T-cell malignancies, it has been shown to be a strong marker of B-cell lymphomas. Anti-CD20 does not cross-react with non-hematopoietic neoplasms.

