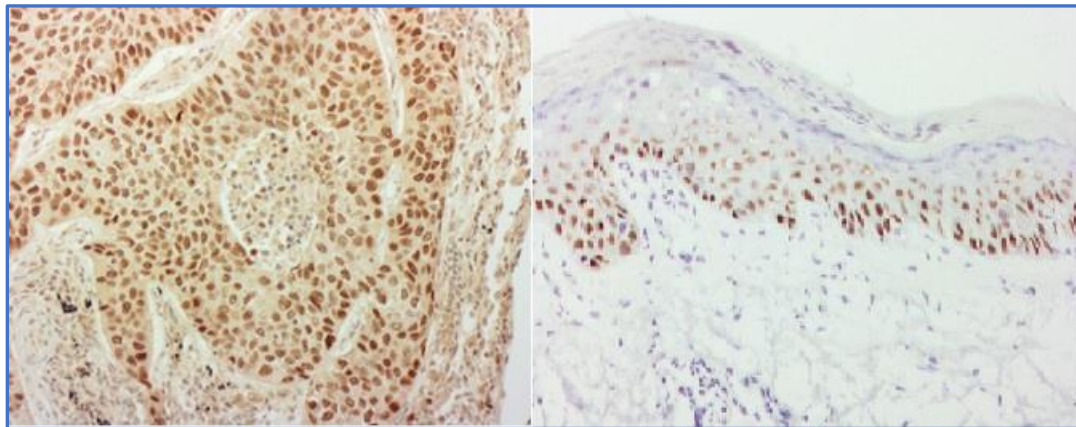


Rapid ihcDirect® p40 IHC test, for skin and lung cancer testing

November 9th, 2020 NovodiAx Inc. in Hayward, CA continues to enjoy success in adapting, developing, and delivering new ihcDirect antibody assays for rapid diagnostic applications. According to Jianfu Wang, PhD, this new ihcDirect p40 assay has many uses. For example, using TTF1 for lung cancer diagnosis and supporting rapid panel testing of other histology panels such as: breast, prostate, esophagus and skin. Furthermore, ihcDirect assays such as p40 can be performed nearly anywhere in the lab, from a small 18-inch lab bench to being easily adapted to a fully automated open platform IHC system.

As a pioneer in the area of rapid in vitro diagnostic histology and rapid cytology testing, NovodiAx is making it possible for clinicians to impact patient care via very fast test result turnaround times, especially for frozen tissue applications. ihcDirect assays can help physicians more efficiently manage their patient workflows and workloads and help to reduce the need to hold patients over to the next day to complete Mohs micrographic surgery procedures. In other settings, having rapid immunoassay tissue test results may help pathologists and surgeons more rapidly assess cancers of unknown origin, enhance H&E test results where reading a given area of tissue may appear ambivalent or unclear, support clinical decision such as extracting fewer lymph nodes during surgery and reduce the number of required secondary or follow-up surgeries required due to incomplete excision.

The ihcDirect p40 assay utilizes the proprietary NovodiAx polymerized HRP chemistry which helps to improve staining sensitivity and increases test speed.



P40 Ab in tissue sections: Left) Lung Cancer, Right) Frozen Skin

ihcDirect p40 is a p63 protein variant that distinguishes non-small cell lung cancer characteristics that is used to dictate chemotherapy regimen. p40 is expressed in breast, cervix, placenta, prostate, and skin. Clinically, p40 can classify non-small cell carcinomas such as adenocarcinoma or squamous cell carcinoma and aids in the identification of large cell lung carcinoma. p40 tissue stains demonstrate high sensitivity and specificity for squamous cell carcinoma, malignant mesothelioma neuroendocrine carcinomas.



NOVODIAX

Advancing immunoassays through innovation

The ihcDirect p40 assay is ready-to-use and requires no special handling such as heat-induced epitope retrieval (HIER) pretreatment or antigen retrieval of the tissue prior to running frozen tissue sections. This assay is convenient to perform manually but can be easily adapted to open automated IHC systems. This means that ihcDirect p40 testing can fit neatly into dermatology practice, hospital lab, or clinic. The assay pairs well with other soon to be released ihcDirect assays such as TTF1, Napsin A and Chromogranin A and also works well for FFPE histology tissue sections.

Please contact us to learn more!

About Novodiox:

Novodiox, Inc. is a privately held company founded in 2009 and dedicated to advancing tissue-based and cell-based diagnostics and immunoassays. The company developed the innovative ihcDirect platform allowing rapid determination of tissue during intraoperative procedures and is exploring applications for cytology and companion diagnostics. For further information visit our website at www.novodiox.com.

For inquiries please contact:

Novodiox, Inc.

Sales@novodiox.com

Intl-Sales@novodiox.com

3517 Breakwater Ave

Hayward, CA 94545, USA

Toll Free: +1 (888) 439-2716

Phone: +1 (510) 342-3043